

DYNAPAC LARGE PAVER RANGE

Dynapac F2500W / F2500WS /
F2500C / F2500CS
Conventional Electric Control



Atlas Copco

THE F2500 LARGE PAVER RANGE is designed with conventional electric control to combine high paving capacity with a high quality Dynapac vario screed. The pavers feature an efficient drive concept, best in class operator comfort as well as ease of service - a perfect recipe for excellent paving results!

PRECISE POWER & SMART DESIGN

CONVENTIONAL WHEELED POWER

The key benefits of F2500W and F2500WS are Quality, Reliability and Simplicity! These wheeled pavers have powerful rear wheel drive and additional 2 front wheel drive for the F2500WS which allows paving up to 6.6 m. Choose between a gas or electric heated V5100 vario screed with a range of leveling systems to achieve the best paving results on any jobsites. This paver is designed for safe operation. It has conventional electrics for easy operation and maintenance. Our F-series has an intuitive control panel with ergonomic operator platform. Your robust wheeled partner for paving up to 6.6 m!

CONVENTIONAL TRACKED POWER

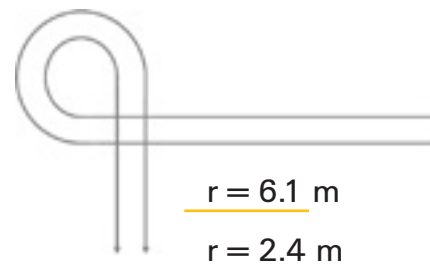
The key benefits of the F2500C & F2500CS tracked pavers are Quality, Productivity and Reliability! These pavers are designed for easy operation with high quality paving results. They have conventional electrics for easy operation and maintenance. Along with an efficient drive system that is most fuel efficient, we offer environmental friendly gas heated as well as electric heated screeds for perfect laying results. F2500 tracked pavers are equally suited for asphalt, soil or soil cement applications.

	F2500W	F2500WS
Eng. power at 2,200 min ⁻¹	110 kW	129 kW
Theor. paving capacity	650 t / h	650 t / h
Max. working width	6.6 m	6.6 m

	F2500C	F2500CS
Eng. power at 2,200 min ⁻¹	110 kW	129 kW
Theor. paving capacity	650 t / h	750 t / h
Max. working width	8.1 m	9.0 m



OPTIMAL DRIVE



COMPACT DESIGN WITH GREAT MANOEUVARABILITY

The F2500W & 2500WS wheeled pavers' compact size and inner turning circle of 2.4m make them easy to operate in narrow streets and roads. They are also easy to transport, with a 17 degree ramp angle.

PRECISE &



EXCELLENT STABILITY

The paver is well balanced with a low centre of gravity. The hydrostatic drive system offers a smooth driving experience with good speed ramp up. Thanks to the new hydrostatic brakes the paver has a smooth but effective service brake. In addition we offer a multi disc parking brake.

OUTSTANDING TRACTION

The pavers have ample traction due to smart rear wheel drive along with wide tires. The new F2500WS comes with additional 2-front wheel drive. The low profile tires give superior ground contact and effective traction in work as well as drive modes.

The paver features an asymmetric suspended axle that allows ground contact for the front tires in uneven ground conditions. This also improves our drive capability at all times.



POWERFUL DRIVE

ALPHA-TRACK™

Our Alpha-Track™ system for our tracked pavers is long and wide. It has 320 mm wide rubber pads which give great ground contact. The tracks are very low and give an optimal dumping height. The high number of rollers inside the tracks improve manoeuvrability in curves. The independent drive on each track enables 360° turns. The track pads are specially designed for paving applications and have a higher rubber thickness for longer life and lower costs.

The F2500C/CS have optional rock deflectors and push rollers with central pivots for oscillation. The low profile tracks have hydraulic tensioning and optimized suspension for even more traction and rigidity.

POWERFUL HYDRAULICS

The tracks are driven by powerful hydraulic motors with planetary gears for high torque to meet all traction demands. The track motors also have an automatic flow control system to maintain straight drive.

RELIABLE QUALITY



UNMATCHED

MATERIAL FLOW

The hopper is designed for outstanding material transfer. It is long (1953 mm) and has a very low dumping height for fast and easy material transfer from lorries. Separately controlled hopper wings with generous solid rubber flaps ensure quick and easy handling of material. Chamfered hopper corners prevent cold material being left in the hopper.

SMART MATERIAL CONTROL

The conveyor tunnel is shaped for an optimal flow and minimal segregation. A twin conveyor system offers smooth transfer. A high capacity kit is available for laying extra thick, wide layers. To ensure a flawless material flow, we offer a robust paddle sensors system for proportional control.

STRONG AUGER SYSTEM

The left and right augers are reversible and have independent drives. The auger speed is adjusted steplessly by the sonic sensors to ensure smooth material flow. The auger system has high torque to suit all paving widths as well as thickness. The auger height can be adjusted by 250 mm!



*Flow control with ultrasonic sensors
- ensures smooth flow of material*



EFFICIENT AND RELIABLE POWER

Dynapac F-pavers are powered by a Cummins QSB 6.7 water cooled diesel engine, that drives an efficient hydraulic system with power transfer through a split gear box. The efficient engine with new cylinder block offers high torque as well as improved fuel efficiency. The increased fuel tank capacity and low fuel consumption result in long intervals between refills. An improved, larger thermostatically controlled cooler eliminates the risk of the hydraulic system overheating even on extremely hot days!

ADJUSTABLE RPM

The driver can set the engine rpm according to the particular jobsite situation. This results in reduced paving costs, lower noise levels and an increased lifetime of your diesel engine.

PAVING QUALITY

OPERATOR'S COMFORT

The operator's comfort is our priority. We focus on providing a comfortable place to work efficiently. The platform offers generous head room and a flat floor with a large storage space.

The F-paver features a platform that guarantees a good all round view from the operator's seat. It has 2 adjustable comfortable seats and a slidable operation console with conventional toggle switches.

The big storage boxes are set in to the platform floor to improve the rear view. The roof features four integrated working lights to the front and to the rear.



DYNAPAC F2500 W/WS

INTEGRATED WORKING LIGHTS

Atlas Copco offers integrated front and rear lights as well as lights for the auger compartment.

POWERFUL ENGINE

The F-pavers come with reliable and easy-to-service Cummins QSB6.7 engines which ensure ample power even under the most demanding conditions.

DYNAPAC SCREED

Most appreciated in market with integrated leveling functions for excellent quality. The Flexilever offers fast and convenient change of screed angle for different layers and thicknesses.

SMOOTH FLOW

Unmatched capacity and minimized segregation through a perfectly balanced, fully automated conveying system.



STRONG AUGER

Our strong auger system has an improved torque to provide a perfect paving result at all working widths. It features slim central drive for less segregation. The auger height can be adjusted manually or up to 250 mm.

POWERFUL UNDERCARRIAGE

Drive system features powerful rear drive along with excellent turning radius of 2.4m (inner) and a wheel-base of 2,240mm.

FEATURES & BENEFITS



CONVENTIONAL CONTROL

The conventional electrics with toggle switches are self-explanatory and easy to learn and maintain.

ERGONOMICS

High operator platform with swingable seats as well as adjustable dashboard for best view and comfort.

HIGH CAPACITY HOPPER

Large hopper with separately controlled hopper wings and chamfered corners. The very low dumping height makes unloading trucks easy.

PUSH ROLLERS

Oscillating push rollers for reduced impact from trucks.

SAFE TRANSPORT

Manually operated locking cylinders for the leveling arms. Safe and easy!

DYNAPAC F2500C/CS

ERGONOMICS

Excellent view to the hopper and all working areas due to the higher seat position. The two ergonomic seats and control console can be adjusted to any position you need.

POWERFUL ENGINE

The F-pavers come with reliable and easy-to-service Cummins QSB6.7 engines which ensure ample power even under the most demanding conditions.

SAFE TRANSPORT

Manually operated locking cylinders for the leveling arms. Safe and easy!

DYNAPAC SCREED

Most appreciated in market with integrated leveling functions for excellent quality. The Flexilever offers fast and convenient change of screed angle for different layers of thicknesses.

STRONG AUGER

Our strong auger system has an improved torque to provide a perfect paving result at all working widths. It features slim central drive for less segregation. The auger height can be adjusted manually or up to 250 mm.



FEATURES & BENEFITS

INTEGRATED WORKING LIGHTS

Atlas Copco offers integrated front and rear lights as well as lights for the auger compartment.

CONVENTIONAL CONTROL

The conventional electrics with toggle switches are self-explanatory and easy to learn and maintain.

THERMOSTATIC CONTROL

The large thermostatically controlled cooler eliminates risk of overheating the hydraulic system.

HIGH CAPACITY HOPPER

Large hopper with separately controlled hopper wings and chamfered corners. The very low dumping height makes unloading trucks easy.



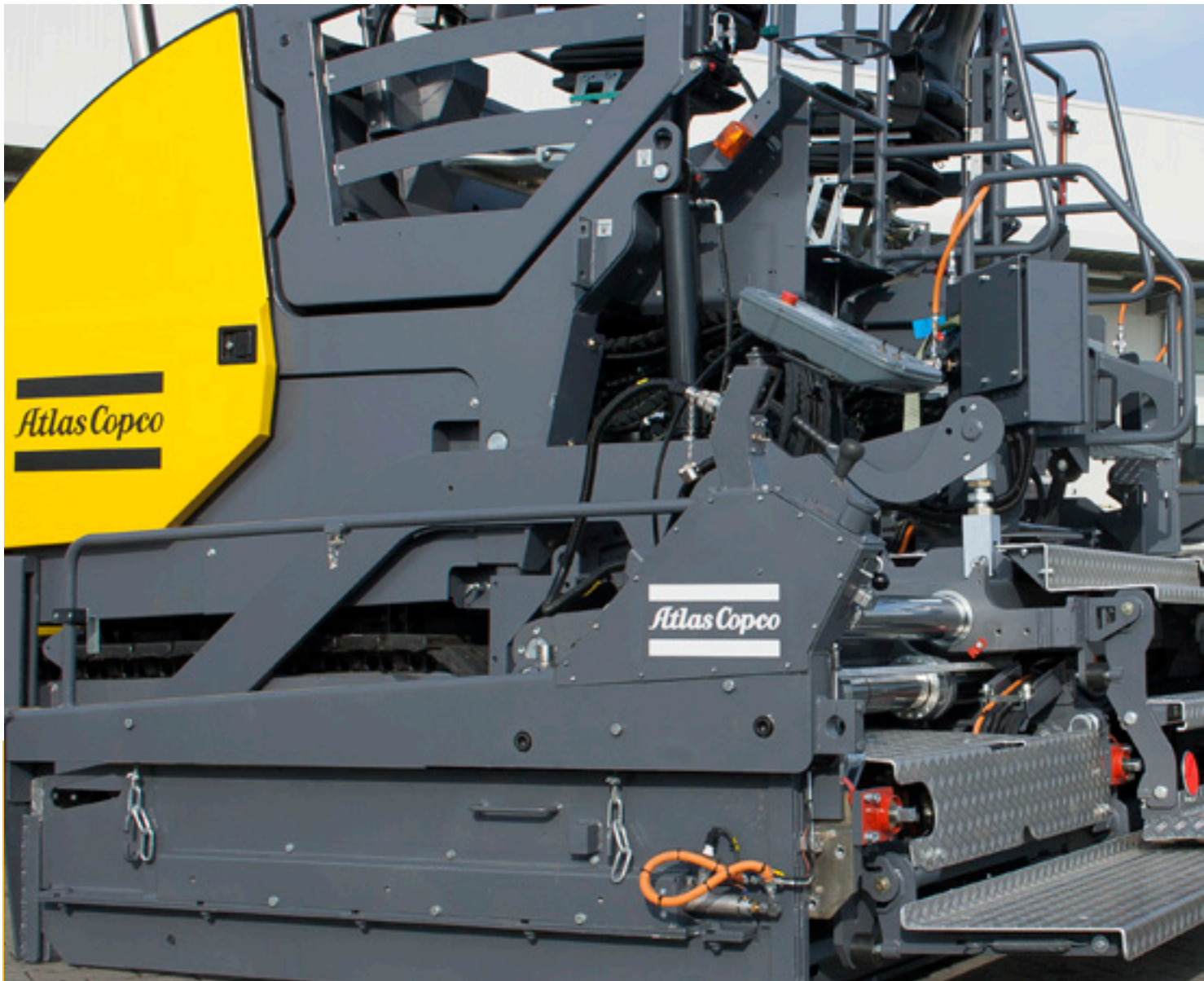
ALPHA - TRACK™

Outstanding driving experience, due to a well-balanced undercarriage. Dynapac wide Alpha tracks gives more ground contact and better traction with thick track pads specially designed for pavers.

PUSH ROLLERS

Oscillating push rollers for reduced impact from trucks.

HIGH PERFORMANCE SCREEDS



4-TUBE PRINCIPLE

Dynapac screeds are the most appreciated screeds on the market, worldwide!

The screed is extremely stable due to our well-proven four-guiding tube principle which offers unmatched screed stability. Our screeds are easy to assemble while they don't need any supporting rods, even at large working widths. This allows you to fully focus on the paving process and save money on set-up times.

ELECTRIC OR GAS – YOUR CHOICE!

Our optimized electrical heating system features high quality insulation and a stronger generator that significantly reduces heat-up times. The generator is driven by a flexible shaft from the gear box that offers great reliability and reduced maintenance. We are able to achieve even heat distribution thanks to our well-designed heating coils for bottom plates and tampers. Those opting for our gas heating system gets a remarkably shorter heat-up time and amazing pavement quality from the first stretch of track! Dynapac supports sustainable gas heating systems to reduce energy consumption as well as CO₂ emissions.



ECCENTRIC FLEXI LEVER

Dynapac's unique Flexi Lever quickly and conveniently changes the angle of attack. This offers a visual control of screed settings to adopt various layer thicknesses during the paving process. The adjustment is made via a simple lever.



ERGONOMIC SIDE SHIELD CONTROL

The height and the angle of the side shield are adjustable with only one crank. The crank is placed on top of the side shield below the remote control, creating a comfortable and central workplace for the screed operator.



ERGONOMIC WORK PLACE

In addition to effective compaction the Dynapac screed offers great accessibility. The low height gives you a superior view into the auger compartment and constant control over material flow. This low profile screed provides a central, safe and ergonomic workplace.



VARIO SCREEDS

	<i>V5100TV/TVE</i>	<i>V6000TV/TVE</i>
Basic width	2.55 m	3.00 m
Hydraulically extendable to	5.10 m	6.00 m
Heating system	LPG/ Electric	LPG/ Electric
<i>Maximum working width (with extension parts)</i>		
F2500W	6,6 m*	-
F2500WS	6,6 m	-
F2500C	8,1 m*	-
F2500CS	8,8 m	9,0 m

*Gas only

HIGH QUALITY SCREEDS



EASY TRANSPORTATION

Compact dimensions, high manoeuvrability and a large ramp up angle of 16° or 17° together with large and easily accessible transport lugs, mean loading and transportation are simple to manage. The mechanical screed arm lock and mechanical lock for the hopper cylinder are safe to use and make it easy to transport the paver quickly.

MAINTENANCE WITHOUT OBSTACLES

We have cleared the way to make maintenance easy. Hydraulic pumps, fuel caps, chain clamping device – each component is directly accessible and easy to find. A simple visual inspection of filters and engine parts allows you to quickly get started. It is a convenient combination you'll profit from every day.

RAPID ACCESS THROUGHOUT

The goal is to save you time and money through easy access. Therefore we've made the service points central and accessible. The fuse box is easy to access from the cabin platform allowing rapid replacement. The sheer number of plug-and-play components also speeds up the maintenance process.

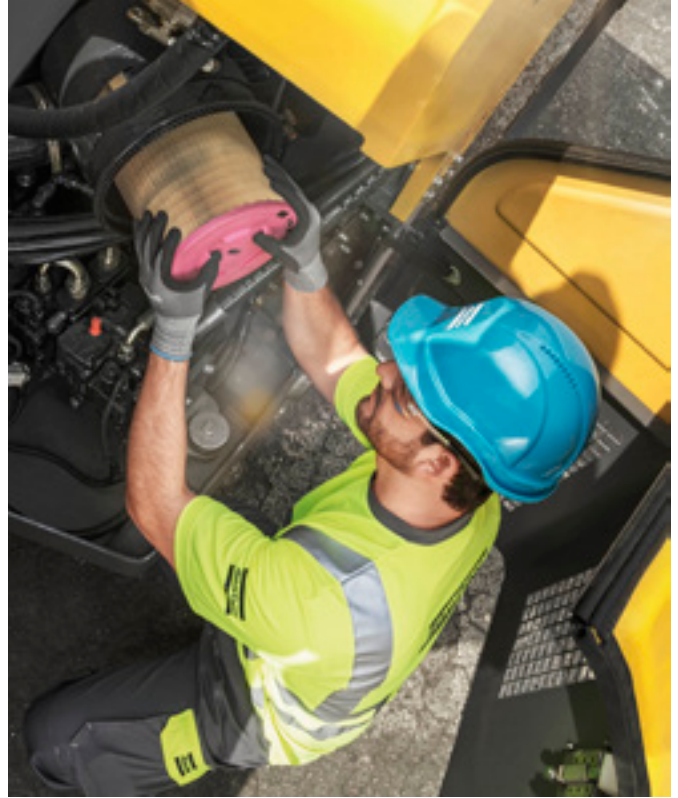


SERVICE COMMITTED TO YOUR FUTURE

TRAINING

Atlas Copco Road Construction division puts a lot of focus on development of local competence within our customer centers and dealers. With many years of experience at our production facilities in handling Road Construction Equipment we have developed training packages that allow our service technicians as well as our customers to develop competence in both equipment application and maintenance. Please check our website for suitable training programs or ask our local representative.

Find details of training at [dynapac.com / training](http://dynapac.com/training)



EXTENDED WARRANTY & SERVICE AGREEMENTS

We have developed service agreements based on customer feedback, application know-how, field support knowledge, and product development experience. You can select a service agreement that meets your needs and budget, allowing you to get the most out of your equipment investment.

UPGRADE KITS

Our upgrade kits are an economical solution that ensures your equipment is up to date with the latest Atlas Copco technology. Upgrades are based on proven technological solutions, readily available and easily installed. They will maximize your equipment's productivity and market value, as well as optimize your equipment's efficiency, to increase your profits.



ALL-IN-ONE BOX KITS

An all-in-one box, tailored to match your equipment. The parts you need, when you need them! An all-in-one box contains all the parts required as part of the equipment's scheduled maintenance program. When installed by an Atlas Copco certified technician, downtime is kept to a minimum and your equipment stays in top condition its entire life.

Easy to obtain and attractively priced, the most effective solution to keep your maintenance budget low.

Find a suitable kit at [dynapac.com / kitselector](http://dynapac.com/kitselector)

FLUIDS

- The right fluid optimizes machine performance
- Simplified selection process, less time spent on finding the right oil
- Delivery in a handy container, no need for transfer from an oil drum
- All-in-one delivery, less time spent on waiting and dealing with different suppliers
- One invoice, less administration

Find a suitable fluid at [dynapac.com / fluidselector](http://dynapac.com/fluidselector)

GO MOBILE

Construction App

Find all the information about Atlas Copco Construction Technique's products and services.

Parts Online

User-friendly platform to find the spare parts and catalogues for construction equipment.

Shop Online

Handle your orders 24 hours a day. Fast, easy and safe.



TECHNICAL DATA DYNAPAC CONVENTIONAL LARGE PAVERS

	F2500W	F2500WS	F2500C	F2500CS
Dimensions				
Weight, t	16,5	16,5	18	18
Basic width, m	2,55	2,55	2,55	2,55
Working width max, m	6,60	6,60	8,10	9,00
Working width min (w/reduction shoe), m	2,05	2,05	2,05	2,05
Hopper width internal, mm	3142	3142	3292	3292
Dumping height center, mm	574	574	555	555
Capacity				
Placement thickness, mm	-150 up to +310	-150 up to +310	-150 up to +310	-150 up to +310
Capacity, t/h	650	650	650	750
Engine				
Engine model	Cummins QSB 6.7 - C173			
Rated power KW @ 2200 rpm	110	129	110	129
Emissions	Stage IIIA (T3)	Stage IIIA (T3)	Stage IIIA (T3)	Stage IIIA (T3)
Electrical system, V	24	24	24	24
Fuel tank capacity, l	315	315	320	320
Crawler				
Crawler length mm	-	-	2900	2900
Crawler width, mm	-	-	320	320
Rear wheel	445/80R25	445/80R25	-	-
Front wheel	4x560/300-390	4x560/300-390	-	-
Front wheel drive	-	2	-	-
Final drive	Hydrostatic direct drives comprised of planetary gear units and hydraulic motors			
Paving speed, m/min	30	30	30	30
Transport speed, km/h	15	15	4	4
Conveyor				
Conveyor type	Dual bar feeder			
Conveyor width, mm	2x580	2x580	2x655	2x655
Conveyor control	Automatic with limit switches			
Auger				
Auger diameter, mm	380	380	380	380
Auger control	Automatic with ultrasonic sensors			
Auger height adjustment, mm	250	250	250	250
Screed options				
Tamper & Vibration Vario screed V5100TV	YES	YES	YES	YES
Tamper & Vibration Vario screed V5100TVE	NO	YES	NO	YES
Tamper & Vibration Vario screed V6000TV	NO	NO	NO	YES
Tamper & Vibration Vario screed V6000TVE	NO	NO	NO	YES

COMMITTED TO SUSTAINABLE PRODUCTIVITY

We stand by our responsibilities towards our customers, towards the environment and the people around us. We make performance stand the test of time.

This is what we call - Sustainable Productivity.

Dynapac GmbH

Ammerländer St. 93 26203 Wardenburg, Germany
Phone: +49 4407 9720 - Fax: +49 4407 972307 www.atlascopco.com

